



Tusk UTV Horn & Signal Kit Installation Instructions

The Tusk UTV signal kit is designed to be a simple way to provide front and rear turn signals, license plate mount with light, horn, and rearview mirrors for your machine. This kit has universal applications and will work on almost any side-by-side.

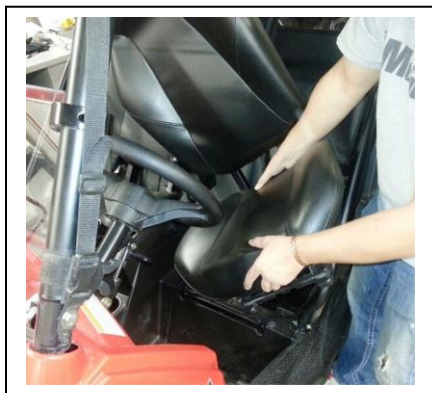
Note: *If this kit is being used to make an off-road UTV street legal, it is the user's responsibility to make sure the kit is compatible with local and State laws.*

Tools needed: *You will need a drill, a 5/16", and 1/2" drill bit. A 3/4" spade drill bit is included in the kit for the turn signals.*

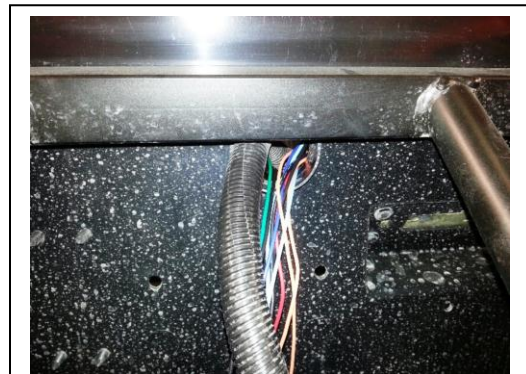
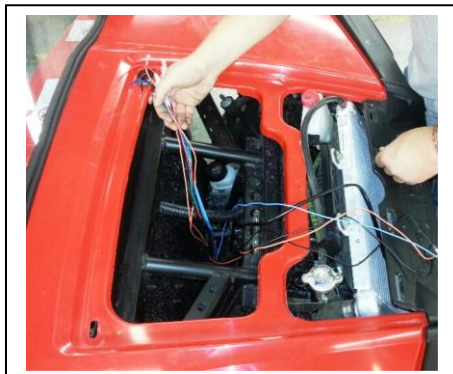
Installation Instructions

Wire harness

1. Each machine will vary, but the goal is to install the wire harness where it will be protected from anything that can damage it (heat, rubbing, impacts, etc.). It is best to follow the route of a stock harness already in place if possible. Remove stock components that may be in the way (hood, skid plate, floor panels, etc.). For the RZR shown below, we removed the seats and the center plastic console.

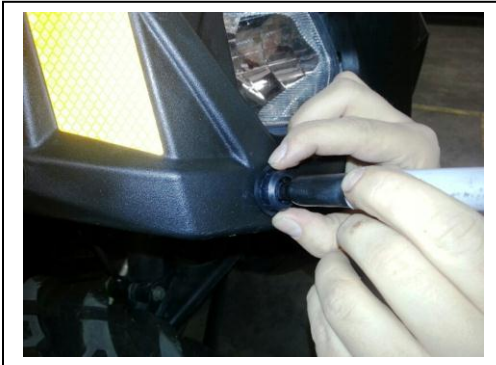


2. Feed harness from the front hood down towards the firewall of the machine. We followed the OEM harness route. Make sure the front of the harness ends up towards the backside of the dash and the rear of the harness at the back of the UTV. Make sure the harness is safe from heat and moving parts of the machine. Do not zip-tie the harness in to place yet.



Turn signals

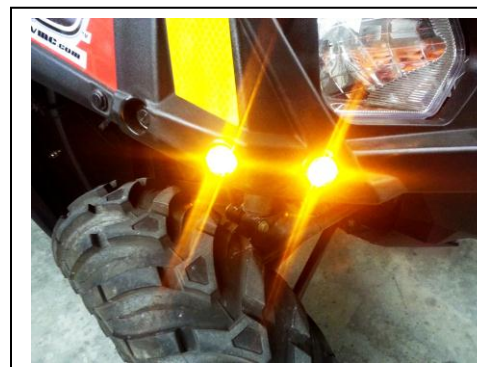
3. Route the signal positive and negative wires from the harness out to the front corners of the machine. Again we are going to follow most of the stock wiring if possible. Be sure that the wires are routed so that they don't get pinched or burned.
4. Looking at the front of the machine, decide where you would like to mount your turn signals. Use a marker to mark where the center of where the signal will be mounted. Be sure that you have enough surface area around the grommet so it sits properly in the hole. Using the supplied $\frac{3}{4}$ " drill bit, put the center of the drill bit on your mark and drill through the plastic. Make sure to not drill into anything else, but the plastic body.



5. To mount the signal, first remove the rubber grommet from the light. Push the grommet into the hole until it is seated correctly into the hole. Feed the wires of the light into the new hole you drilled. Notice the direction on the lens; make sure the "Top" is at the upper point of the light. **Plug the red wire from the signal into the positive wire on the harness and the black signal wire into the ground signal wire.**



6. Repeat steps 3-5 to install the rear signals for the machine. Remember that the polarity on LED lights is critical. Please refer to the Wire Harness Diagram included with the harness packaging to ensure you get the positive and negative wires correctly in place.



License plate mount

7. Looking at the rear of the machine, determine where you would like to mount the license plate. Hold up the mount plate and use a marker to mark the top 2 holes, and then drill a 5/16" hole in the center of your 2 marks. Use the License Plate light bolt and one M8 bolt from the license plate mount hardware to mount the plate to the machine. Remember this is only one of many ways you can mount this.



8. Now that the license plate mount is mounted and the wires for the light are routed, go ahead and plug the wires into the harness. (red to red, black to black) After this is done you should be finished with the rear half of the harness.



Horn and flasher relay

9. To mount the horn, find a suitable location under the hood. You can bend and/or drill the horn bracket for a custom fit. On the RZR shown below, we found an existing hole in the frame and bolted our horn to it (bolt not included). Once you have the horn mounted, connect the red and green wires coming off of the harness into the two spades on the horn.

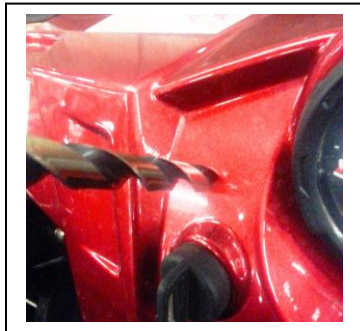


10. Mount the Flasher Relay using an existing bolt on the machine or use a zip-tie to mount the relay in a clear area. Plug in the relay to the white plastic connector with the blue and red wires going to it on the harness.

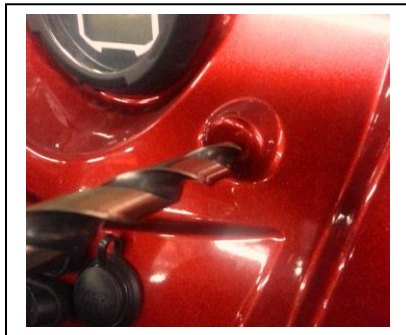


Controls

11. The rest of the harness connectors feed to the dash of the machine. To mount the turn signal switch, drill a 1/2" hole into the dash in a desired area. Remove the rubber cap nut as well as the middle nut on the switch. Push the switch through the hole and thread on the middle nut and the rubber cap nut. Make sure the switch is in the right direction (left to right not up and down)



12. To mount the horn switch, drill a 1/2" hole in the desired area in the dash. Install the switch through the hole and put the sealed rubber nut on.



13. Once you have both switches mounted to the dash you can start connecting the wires to them. Refer to wire diagram.



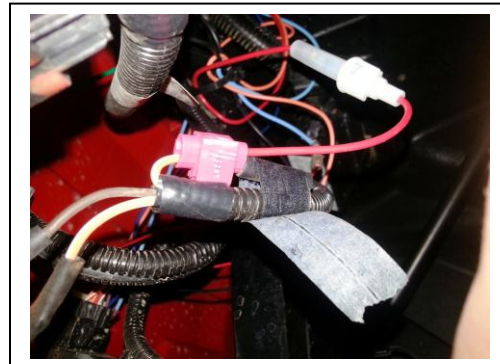
14. To mount the indicator lights, drill a 5/16" hole on both the left and right side of the turn signal switch. Feed the wires of each indicator light through the hole and thread on the nut to secure the light. Plug in the lights, but make sure the indicators are connected to the correct wires on the harness (again, refer to the wire diagram).



Power supply

15. To get power to the harness, ground the harness's ground wire (-) to an existing bolt on the frame. Make sure the ground is clean and paint is removed for a good connection. Take the red positive (+) wire from the harness and splice it to a **keyed power source** (meaning a wire that has power to it only when the key is in the on or run position). Most UTV's will have a 12 volt accessory outlet in the dash that works perfectly. Always use a 12 volt test light first to ensure you are connecting power properly. Once the correct keyed power source is found, connect the harness wire using the supplied splice connector.

***Note:** All UTV's have different Keyed Power points to use for the power connection. Be sure when splicing in the Tusk harness that the machine's wire is a **keyed** powered wire. You can find this by using a test light on wires with the key in the "off" and "on" position.*



16. Once you have the power connected to the machine, turn the key on and test out the horn and the signals to make sure that they are operating correctly. If there is a problem, double check the wiring with the wire diagram, then check the fuse.
17. With all the wiring in place, go ahead and secure the wire harness and wiring in place using the supplied zip-ties.

***Caution:** Make sure all the wiring is safe from heat, sharp edges, or anything that can wear against it. Also, Make sure the wiring does not interfere with any of the controls or parts of the UTV that could compromise the safety of the vehicle.*

18. Starting with the clamp, remove the allen-head screws with a 5mm Allen wrench. Place the clamp with the rubber strap on the A-pillar according to the drivers needs. Bolt the mirror to the clamp and adjust accordingly. You will need to do this on both the right and left side of the machine. Rocky Mountain ATV/MC offers a mirror extension, part number 1335470001 (not included) if desired.



19. ***Note:** For additional information and installation videos, refer to the Rocky Mountain ATV website at www.rockymountainatvmc.com.*